

Revolutionize education with Generative AI on AWS

Heikki Lavanko

Senior Solutions Architect
Amazon Web Services

Today's agenda

1. Generative AI on AWS
2. Generative AI in Education
3. Demo on student use-case

Generative AI on AWS



Innovation can **transform industries**



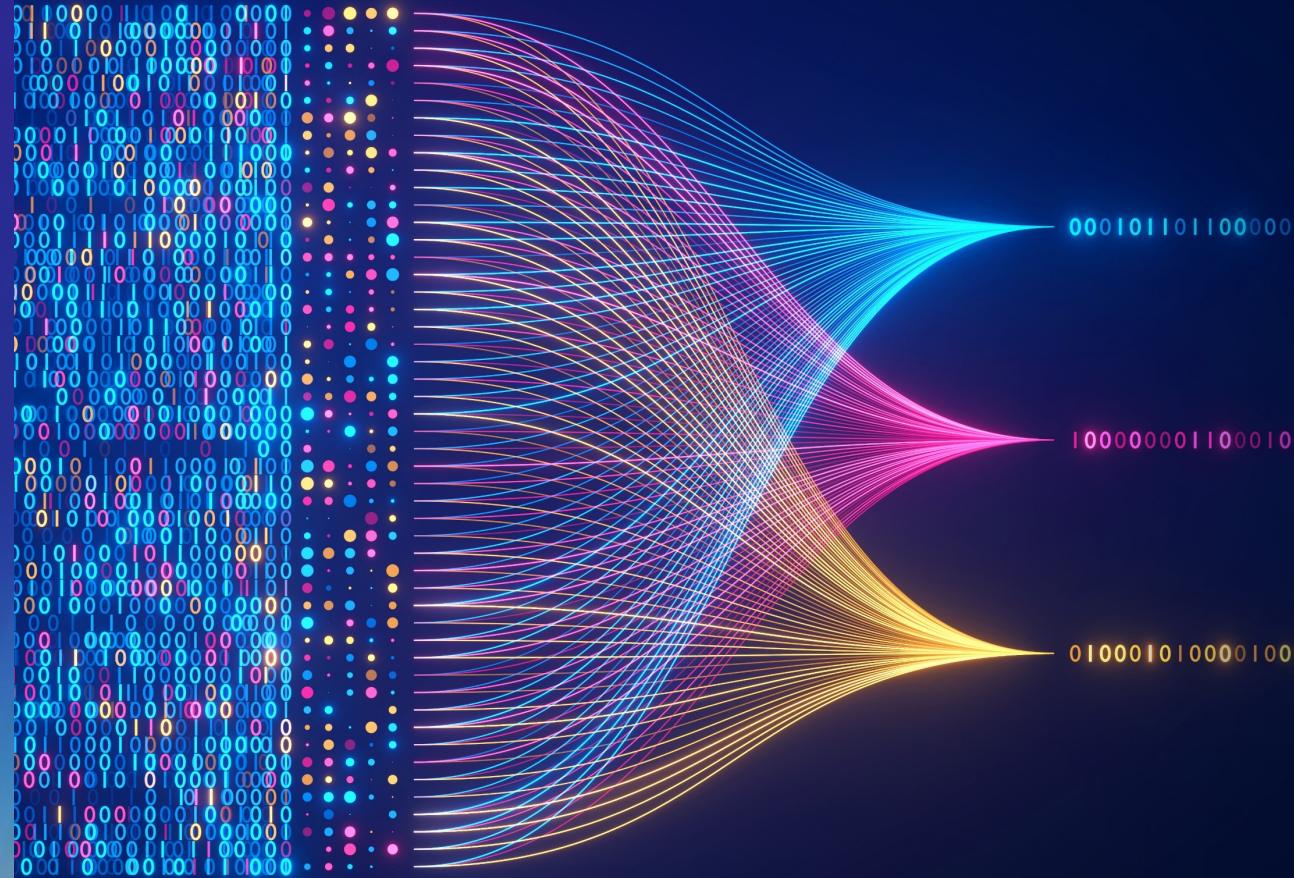
Generative AI is powered by foundation models

Pretrained on vast amounts of unstructured data

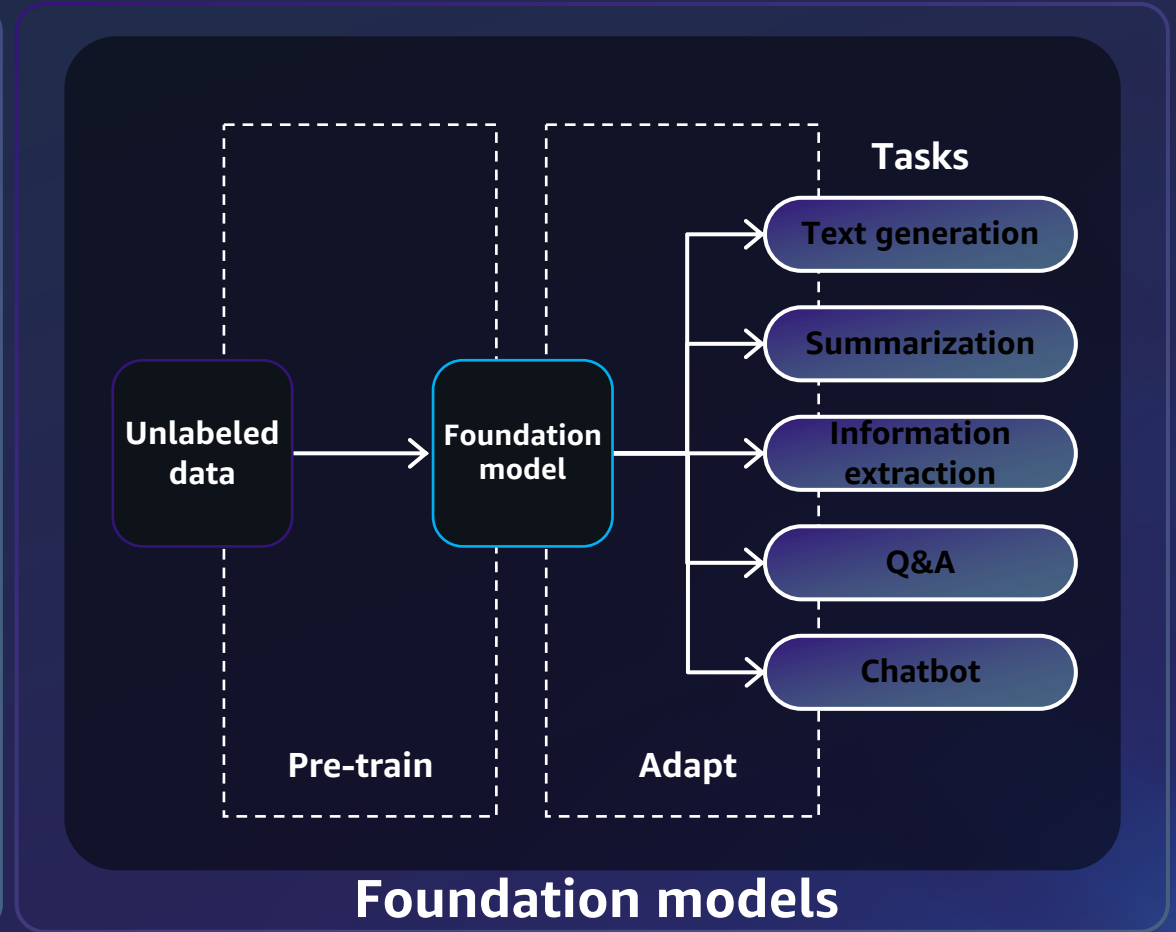
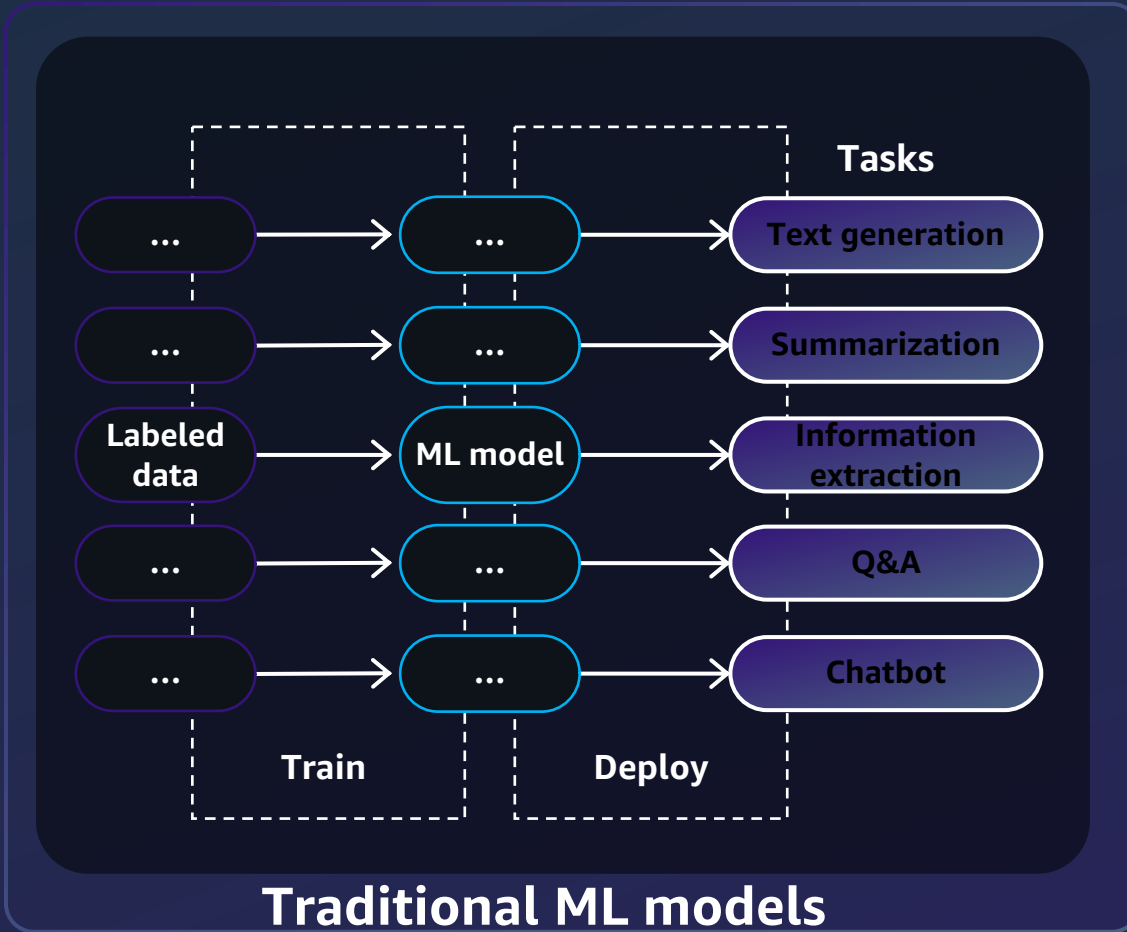
Contain large number of parameters that make them capable of learning complex concepts

Can be applied in a wide range of contexts

Customize FMs using your data for domain specific tasks



Why foundation models?





Generative AI Application

Storage

Structured and unstructured data

Operational databases

SQL, NoSQL, document, graph, vector

Analytics and data lakes

Search, streaming, batch, interactive

Data integration

Capture, transformation, streaming

Data governance

Catalog, quality, privacy, access controls



Make generative AI
work with **your data**



RETRIEVAL-AUGMENTED GENERATION (RAG)

Specialized knowledge through prompt augmentation

Enterprise knowledge corpus

No change to the foundation model



FINE-TUNING

Specialized knowledge for specific tasks

Small number of labeled examples

Change a copy of the foundation model



CONTINUED PRE-TRAINING

Generalized and specialized knowledge for your domain

Unlabeled, unstructured enterprise data

Change a copy of the foundation model

Generative AI Stack

APPLICATIONS THAT LEVERAGE LLMs AND OTHER FMs



Amazon Q
Business



Amazon Q
Developer



Amazon Q in
QuickSight



Amazon Q in
Connect

TOOLS TO BUILD WITH LLMs AND OTHER FMs



Amazon Bedrock

Guardrails | Agents | Customization Capabilities

INFRASTRUCTURE FOR FM TRAINING AND INFERENCE



GPUs



Trainium



Inferentia



SageMaker



UltraClusters



EFA



EC2 Capacity Blocks



Nitro



Neuron



Amazon Bedrock

The easiest way to build and scale generative AI applications with LLMs and other FMs

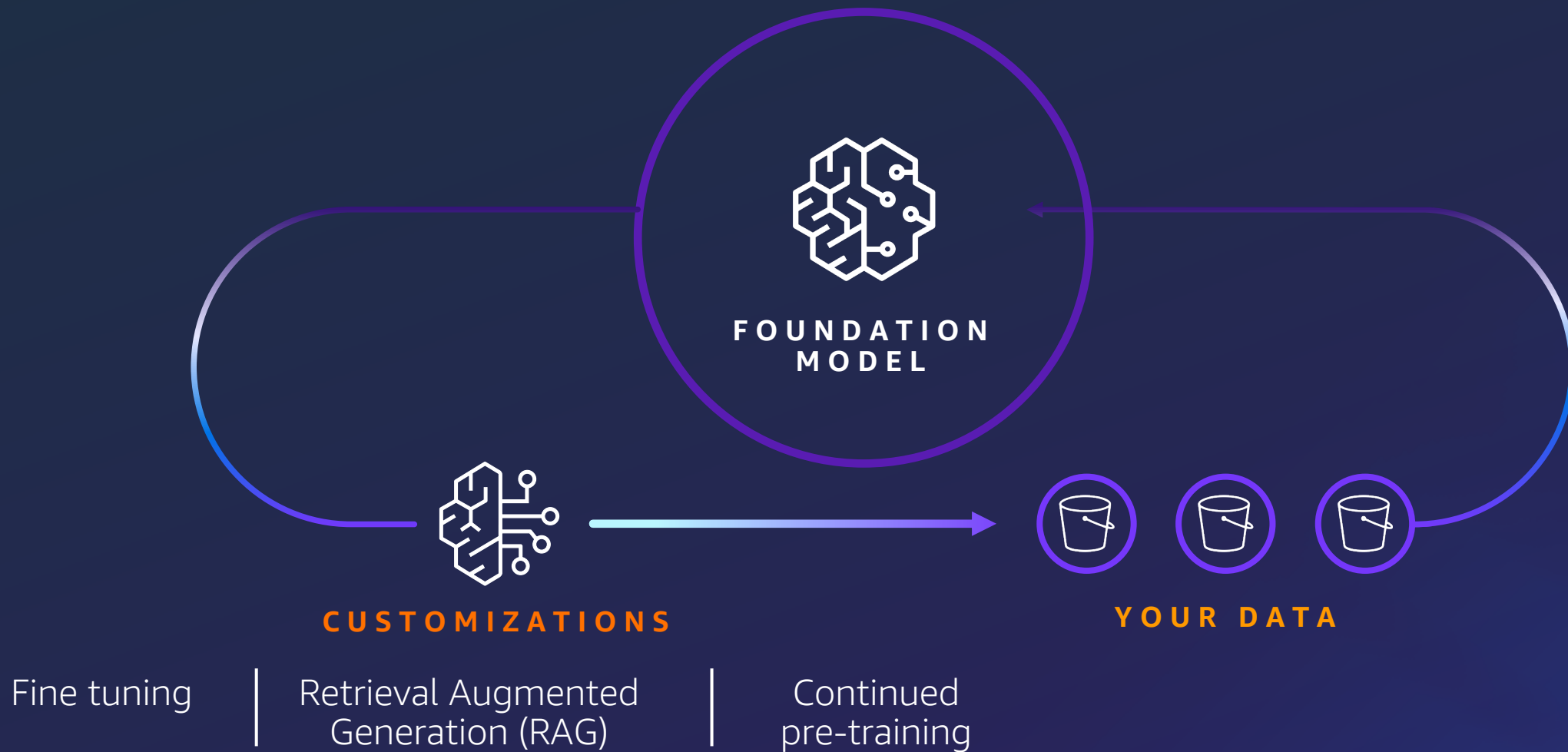
Choice of industry-leading FMs from AI21 Labs, Amazon, Anthropic, Cohere, Meta, Mistral AI, and Stability AI

Customize FMs using your organization's data

Enterprise-grade security and privacy

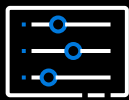
Agents enable generative AI applications to take action in just a few clicks

Amazon Bedrock



Guardrails for Amazon Bedrock

IMPLEMENT SAFEGUARDS
CUSTOMIZED TO YOUR
APPLICATION REQUIREMENTS
AND RESPONSIBLE AI POLICIES



Apply guardrails to multiple foundation models and Agents for Amazon Bedrock



Configure harmful content filtering based on your responsible AI policies



Define and disallow denied topics with short natural language descriptions



Redact or block sensitive information such as PII, and custom Regex

Model evaluation in Amazon Bedrock

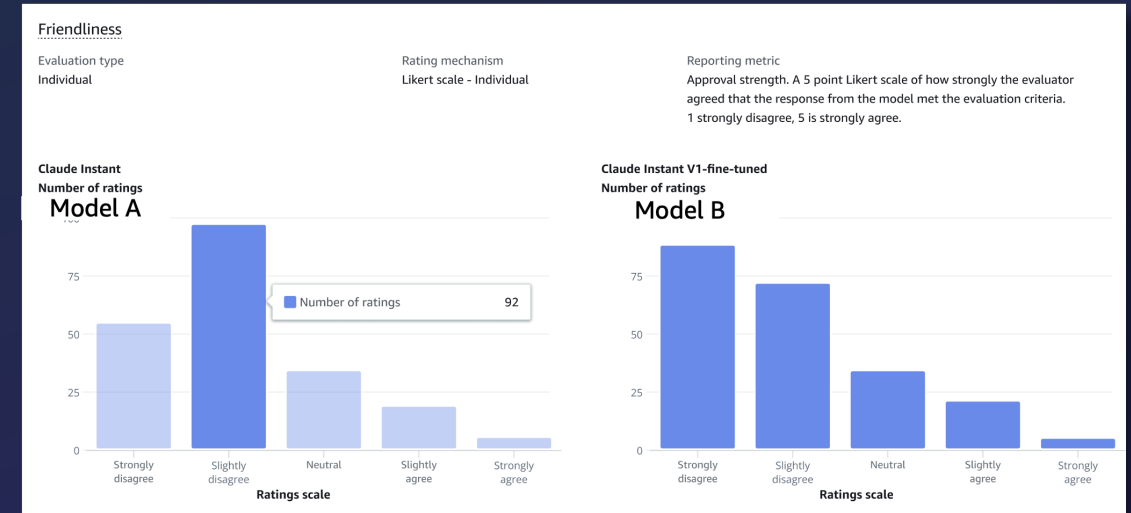
EVALUATE FMS TO SELECT THE BEST ONE FOR YOUR USE CASE

Automatic or human evaluation method

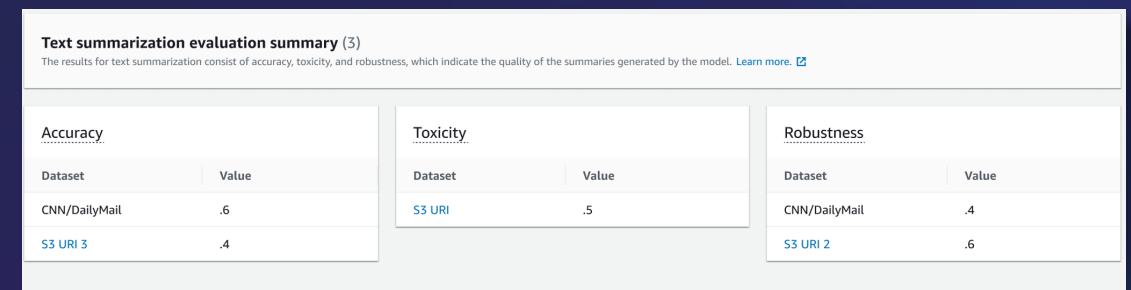
Curated datasets or bring your own

Predefined and custom metrics

Human evaluation report



Automatic evaluation report



Generative AI in education

Education is built on AWS



Generative AI enables innovation and unlocks new institutional value



NEW EXPERIENCES

Create new innovative and engaging ways of interacting with your students and employees



PRODUCTIVITY

Radically improve productivity across the institution



INSIGHTS

Extract insights and clear answers from all your institutional data, enabling faster and better decisions



CREATIVITY

Create new content and ideas, including conversations, stories, images, videos, and music

Enhance experiences



STUDENT ASSISTANTS

VIRTUAL TUTORS

**AUTOMATIC ESSAY
FEEDBACK**

LESSON PERSONALIZATION

MITIGATE AT RISK STUDENTS

Boost productivity & creativity



COURSE RECOMMENDATION

CONVERSATIONAL SEARCH

TOPIC SUMMARIZATION

LESSON CONTENT CREATION

DATA TO INSIGHTS

Optimize processes



**PERSONALISED STUDENT
SERVICES**

DOCUMENT PROCESSING

DATA AUGMENTATION

CYBERSECURITY

**OPTIMIZE RESOURCE
ALLOCATION**

Your data is the differentiator



Generic
generative AI



Generative AI that knows
your context and community

STUDENT SUCCESS

- STUDENT BEHAVIOUR & PERFORMANCE INSIGHTS
- IMPROVED STUDENT RETENTION
- IDENTIFYING 'AT RISK' STUDENTS
- PERSONALIZED LEARNING & ADAPTIVE EDUCATION

ORGANIZATIONAL SUCCESS

- OPTIMIZED COURSE OFFERINGS
- IMPROVED TEACHER EFFECTIVENESS
- PREDICTING STUDENT SUCCESS
- ENHANCING OVERALL INSTITUTIONAL PERFORMANCE



FOUNDATION
MODEL



YOUR DATA

Build a data foundation to fuel generative AI

The objective

Provide curriculum-specific answers to your students to increase knowledge retention

The data

 Learning Management System interaction data

 Video lecture viewing data

 Student library transactions

 Textbook content






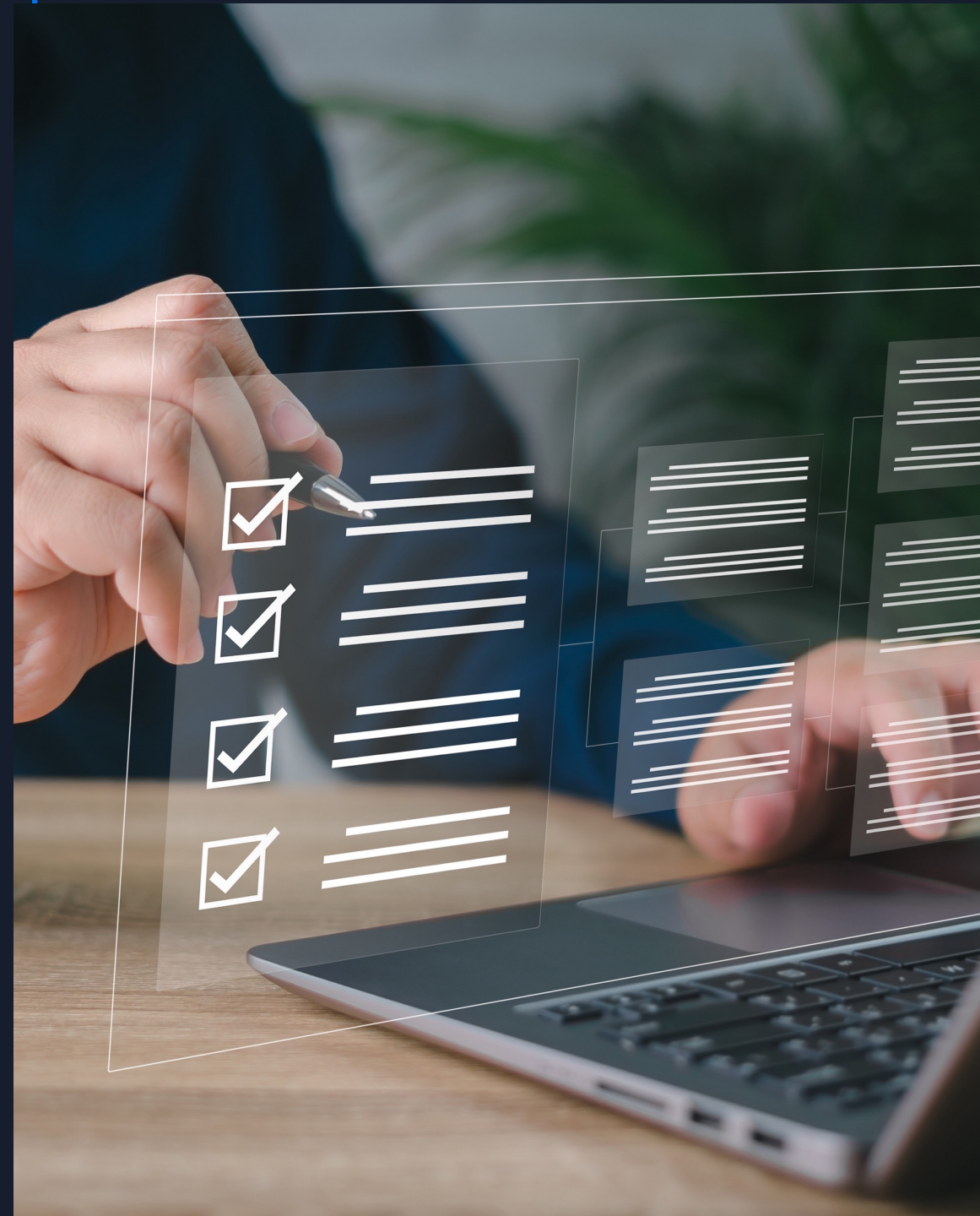
Integrate students from diverse backgrounds

The objective

Provide multi-lingual version of pre-populated forms, applications and native language Q & A to improve inclusivity and sense of belonging

The data

-  Student Records
-  Internal guides
-  University website information



A more personal and relevant learning path

The objective


University wants to generate personalized learning paths

The data

Student profile

 Past courses

 Known interests

 Learning preferences

Student Information System

 Course and lesson catalogue

 Promotions

 Similar student details



GenAI demo & use-case



Current situation



Fast-paced society with
high performance
standards



Multiple personas, all
with different needs
and ways of working



Demand for content
accessibility and
globalization

From student's perspective

- **Accessibility and inclusivity**
- **Productivity**
- **Boost learning outcomes**

Demo use-case

Built for students

- **Accessibility and inclusivity**
 - **Translating** content to different languages – localization!
 - Transcribing audio into text for users who can't or prefer not to listen to the content
 - **Text-to-voice** for those who prefer to listen
- **Productivity**
 - **Summarizing** and **transcribing** content
 - Preferred learning mechanism
- **Boost learning outcomes**
 - Generating **flashcards** to review content
 - **Chatbot assistant** that is able to answer questions based on uploaded content

Architecture

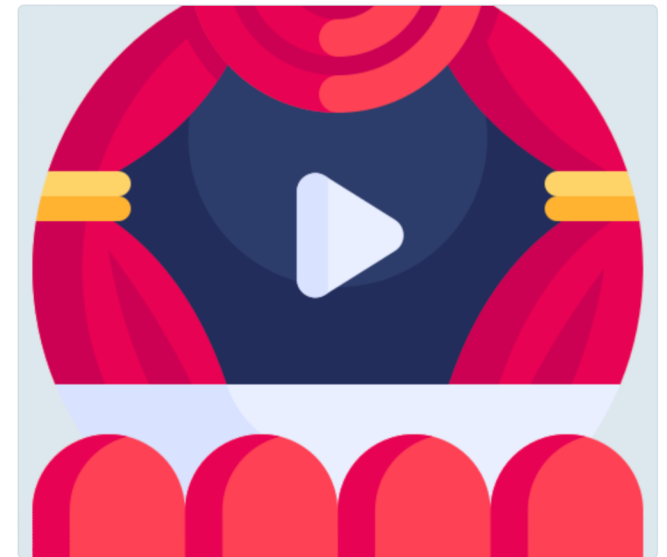


Demo

Welcome to a new auditorium experience

Get more out of your class presentation.
Upload your class recording in the form
below and let us show you what is possible.

Get Started →



Start your generative AI journey today



Generative AI readiness assessment

Get a sense of your institution's preparedness for strategic AI initiatives



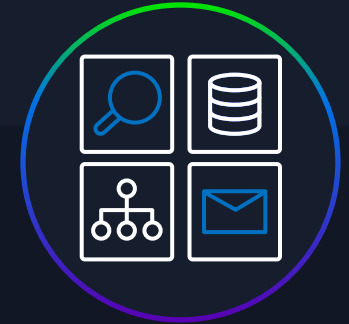
Experiment with LLMs

Build an experimentation playground to learn about power of different LLMs with the context of your institutional data



Learn about generative AI

Discover AI features with step-by-step tutorials upskilling your teams



Identify use case and build a PoC

Work with our experts to engage in an immersive experience

Thank you!

Heikki Lavanko

Senior Solutions Architect

 [linkedin.com/in/heikki-lavanko/](https://www.linkedin.com/in/heikki-lavanko/)

